

ATTENTION ANGLERS

2023 NJ Recreational Size Limits, Possession Limits & Seasons

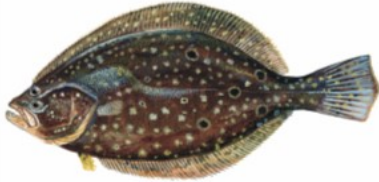


Hard Clam 1.5 inches

Recreational Limit – 150 clams

No harvest on Sunday

Shellfish license required



Summer Flounder (Fluke)

Delaware Bay and Tributaries: 3 fish at 17 inches

Island Beach State Park: 2 fish at 16 inches

All Other Marine Waters: 2 fish at 17 inches to less than 18 inches, and 1 fish at 18 inches or greater

Open Season: May 2 – Sept. 27



Weakfish

1 fish at 13 inches

Open Season: Jan. 1 – Dec. 31



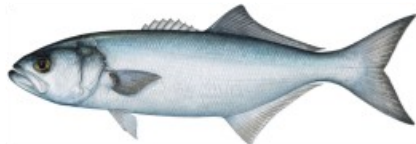
Black Sea Bass

10 fish at 12.5 inches May 17 – June 19

1 fish at 12.5 inches July 1 – Aug. 31

10 fish at 12.5 inches Oct. 1—Oct. 31

15 fish at 12.5 inches Nov. 1—Dec. 31



Bluefish

Private/Shore Angler - 3 fish

For-Hire Vessel - 5 fish

Open Season: Jan. 1 – Dec. 31

- Fish are measured from the tip of the snout to tip of the tail (except Black Sea Bass and Sharks).
- Filleting of fish with a minimum size limit at sea is prohibited. See the Marine Digest or the Fish & Wildlife website for exceptions.



Striped Bass or Hybrid Striped Bass

1 fish at 28 inches to less than 38 inches

See Digest for Striped Bass Bonus Program, Circle Hook Requirements, and Gaff Prohibition.

Del. River and tributaries Calhoun St. Bridge, Trenton to Salem River and tributaries

Open Mar. 1 – Mar. 31 & June 1 – Dec. 31

Atlantic Ocean

0-3 miles from shore, no closed season

Greater than 3 miles from shore, closed

All other marine waters, open Mar. 1 – Dec. 31



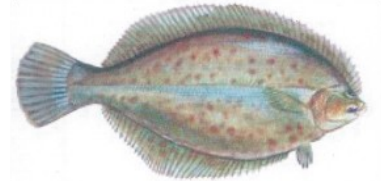
Tautog 15 inches

4 fish Jan. 1 – Feb. 28

4 fish Apr. 1 – Apr. 30

1 fish Aug. 1 – Nov. 15

5 fish Nov. 16 – Dec. 31



Winter Flounder

2 fish at 12 inches

Open Season: Mar. 1 – Dec. 31



Shark

1 fish per vessel

See NMFS for size, season, and gear restrictions.

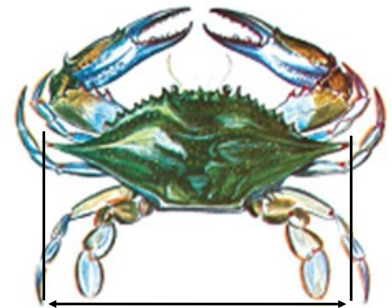
PROHIBITED SPECIES
See the Marine edition of the NJ Fish & Wildlife Digest or Fish & Wildlife's website for a complete list.

Other Species	Possession Limit/Season	Total Length
American Eel	25	9"
Black Drum	3	16"
Cobia	1 per vessel	37"
Cod	NO LIMIT	21"
Haddock	NO LIMIT	18"
King Mackerel	3	23"
Pollock	NO LIMIT	19"
Red Drum	1	18" to less than 27"
River Herring	CLOSED	N/A
Scup (Porgy)	30 fish (Aug. 1 - Dec. 31)	10"
Shad	6 combined	NO LIMIT
Spanish Mackerel	10	14"
American Lobster	6	3 3/8" to 5 1/4" Carapace Length
Jonah Crab	50	4 3/4" Carapace Width

- No more than 2 American shad in Del. Bay, River & tributaries
- Zero American shad in all other waters

• LMA 4 Open Season: Jan. 1 - Apr. 29 & June 1 - Dec. 31

• LMA 5 Open Season: Jan. 1 - Jan. 31 & Apr. 1 - Dec. 31



Blue Crab

(measured point to point)

Peeler or Shedder — 3 inches

Soft — 3½ inches

Hard — 4½ inches

Recreation Limit — One Bushel

Crab pot/Trot line Seasons:

Delaware Bay & tributaries

Apr. 6 — Dec. 4

All other waters

Mar. 15 — Nov. 30

Register before fishing! It's free, easy, and required.

SaltwaterRegistry.nj.gov

New Jersey Department of Environmental Protection
Fish and Wildlife
www.njfishandwildlife.com

This publication is a summary of the New Jersey recreational fishing regulations at the time of publication. It is not the full law.

Updated 3/02/2023

